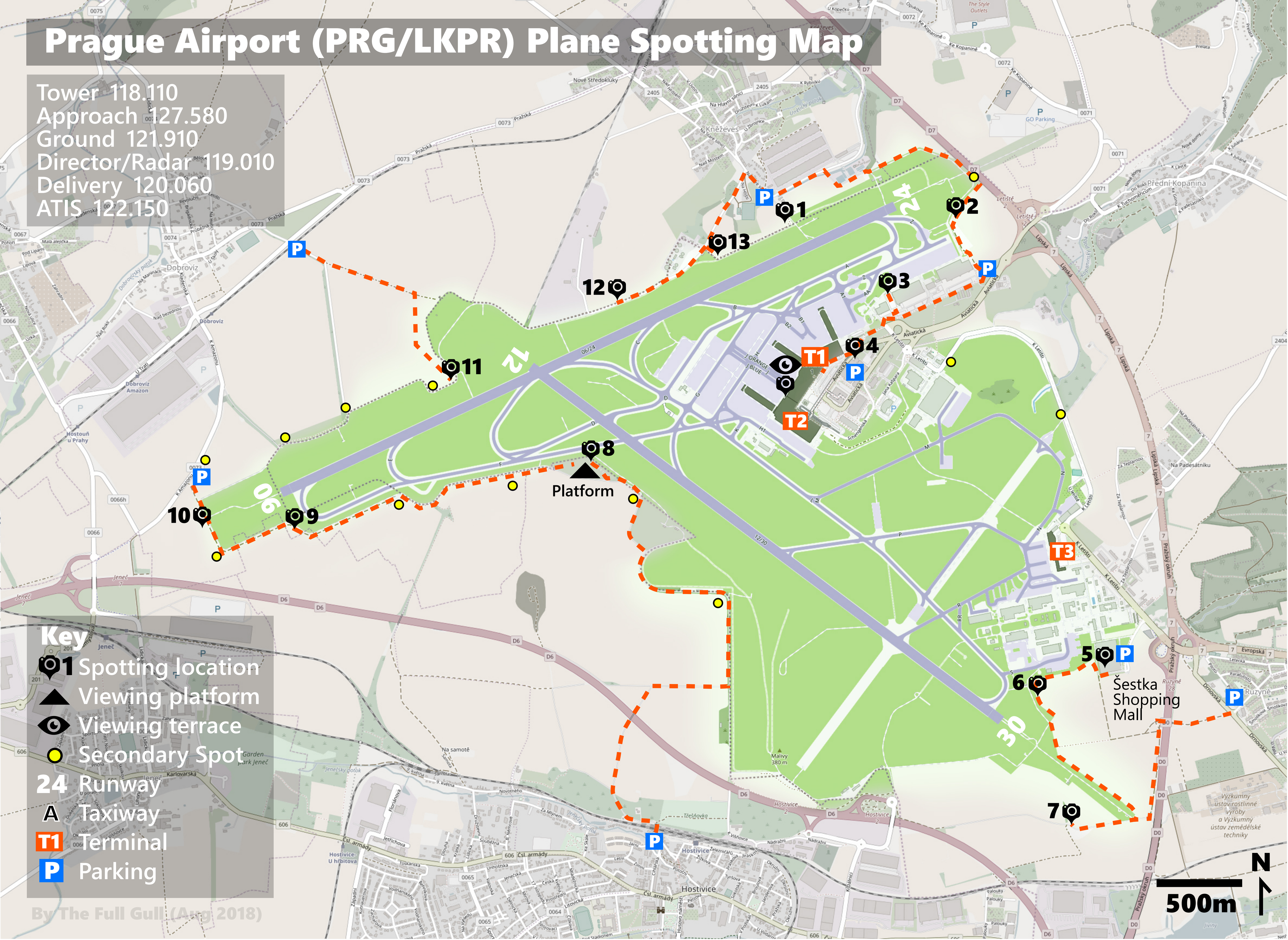


Prague Airport (PRG/LKPR) Plane Spotting Map

Tower 118.110
Approach 127.580
Ground 121.910
Director/Radar 119.010
Delivery 120.060
ATIS 122.150



Spot	Best for	Best light	Access
-	View of the apron between piers B and C	Summer evening	Above Billa store in T2
1	Touchdowns rwy 24	Spring - Summer - Autumn evening	319 bus to Kněžves or 40 min walk from T1
2	Short final rwy 24, lineups	All day, especially winter	15 min walk from T1
3	Taxi and movements rwy 24, de-icing	Morning - afternoon in summer, all day in winter	5 min walk from T1
4	Overview of runway 24 (bit far)	Morning - afternoon in summer, all day in winter	2 min walk from T1
5	Landings and taxi rwy 30	Summer morning, nice sunsets	5 min walk from 100, 119 bus stop "K Letišti"
6	Touchdowns, taxi rwy 30	Morning, evening for sunset	10 min walk from Šestka Shopping Mall
7	Finals rwy 30	Afternoon until sunset	30 min walk from Šestka Shopping Mall
8	Late rotations rwy 30, taxi rwy 06	Afternoon until sunset	35 min walk from parking in Hostouň
9	Short final, lineups rwy 06	Morning for landings, afternoon til evening for taxi	15 min walk from parking in Hostouň
10	Enjoying airplanes, wide angle, sideshots	Early morning, evening sunset against the sun	3 min walk parking in Hostouň
11	Heavy rotation rwy 24, short final rwy 12	Spring - Summer - Autumn evening	15 minute walk from parking in Dobrovíz
12	Rotations rwy 06 and 24	Spring - Summer - Autumn evening	15 minute walk from Kněžves parking lot
13	Touchdowns rwy 24, rotations 06 and 24	Summer morning 06, summer evening 24	10 minute walk from Kněžves parking lot